

TEKLYNX®

CODESOFT®



FORM VIEWER

The information in this manual is not binding and may be modified without prior notice.

Supply of the software described in this manual is subject to a user license. The software may not be used, copied or reproduced on any medium whatsoever, except in accordance with this license.

No portion of this manual may be copied, reproduced or transmitted by any means whatsoever, for purposes other than the personal use of the buyer, unless written permission is obtained from **TEKLYNX Newco SAS**.

©2012 **TEKLYNX Newco SAS**,

All rights reserved.

Table of Contents

- Chapter 1: Introduction 1-1**
 - Introduction. 1-1
 - The layout. 1-1
 - The Menu bar 1-2
 - The Tool bar 1-2
 - The Status bar 1-3
 - The Browser window 1-3
 - The Preview window 1-3
 - The Main window 1-4
- Chapter 2: Using the Form Viewer 2-5**
 - How to use the Form Viewer 2-5
 - Viewing a form 2-5
 - Editing a form 2-5

CHAPTER 1

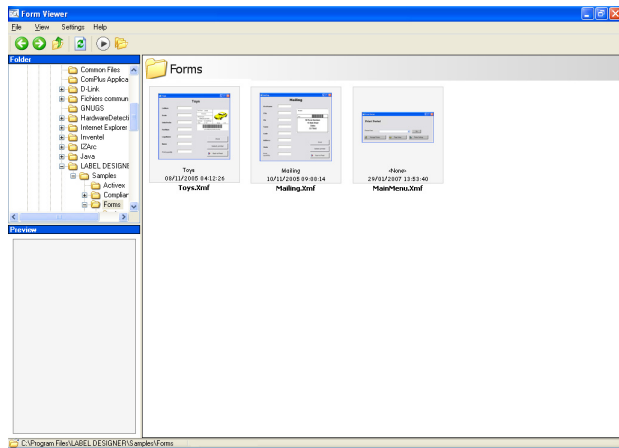
Introduction

Introduction

Form Viewer is an easy-to-use application that lets you view predefined forms. Its simple design makes it easy to use, regardless of your technical knowledge. With Form Viewer, any user can easily select a predesigned form, view it, link it to a label, and print it from a list of configured printers. More advanced users can even edit form design using Form Viewer's sister tool: the Form Designer.

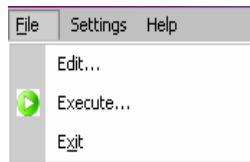
The layout

Form Viewer boasts a simple layout so that any user can quickly become an expert at using it without any long hours spent in training. It features a Menu bar, a Tool bar, a Status bar, a Browser window, a Preview window and a Main window so that accessing and viewing forms can be done in just a few simple steps.



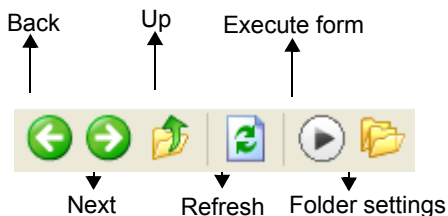
The Menu bar

The Menu bar consists of three menu items: **File**, **Settings**, and **Help**. Clicking on an item will expand the list of actions such as Edit, Execute, and Exit found when you click **File**. To access the menu items more quickly, press Alt + the underlined letter in the menu item's name. For example, to access the **File** menu, click Alt+F.



The Tool bar

The tool bar consists of several icons that can be clicked for easy access to Form Viewer's functionality.



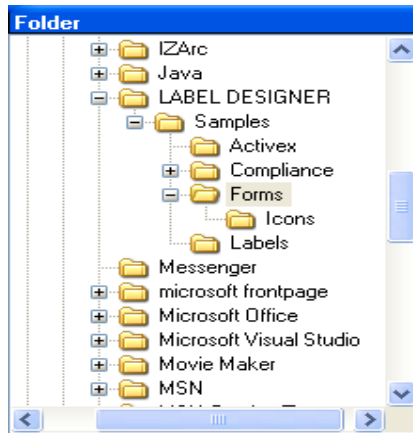
The Status bar

The status bar displays the location of your chosen .xmf file and the number of .xml files available in that folder. It is located at the bottom of your Form Viewer window.



The Browser window

The Browser window allows you to navigate through your files to quickly find your .xml file's location. Much like standard browser windows, it is a hierarchical display of your computer and network's filing system. It can be found on the upper left of the Form Designer's screen.



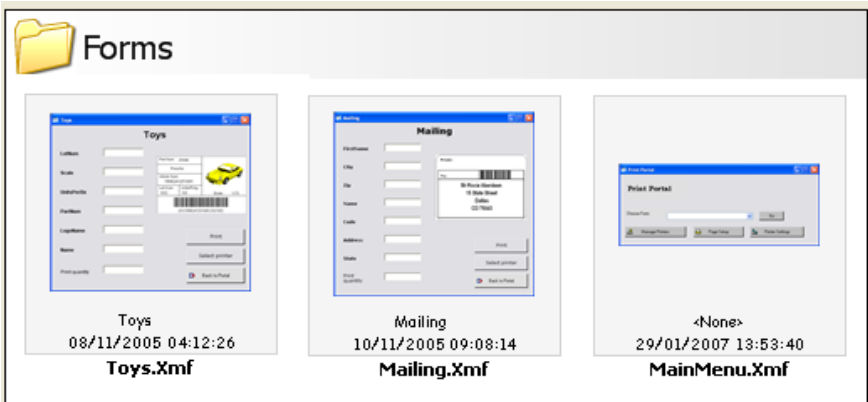
The Preview window

The Preview window allows the user to view a larger image of the file that is selected, or highlighted, in the main window. It is located in the lower left of the Form Viewer's screen.



The Main window

The Main window occupies the right-hand side of your Form Viewer screen. It displays the list of XMF files available in a selected folder or, alerts you that no XMF files can be found in the selected folder.



Right-clicking on a form will display a contex-sensitive menu where you can choose to edit or execute a form.

CHAPTER 3

Using the Form Viewer

How to use the Form Viewer

Viewing a form

1 Locate the folder where the .xml files (pre-defined forms) are kept, and double-click on it.

You will see thumbnails of the available .xml files in that folder on the main window.

2 To select and execute a form, double-click on the form of your choice.

- or -

Click once and go to **File > Execute**.

-or -

Click once and click the **Execute** icon found on the tool bar



Editing a form

You can edit a form if you have Form Designer installed on your workstation as well. If you do, select the form you would like to edit and go to **File > Edit**. The selected form will open in a Form Designer window allowing you to change, add, or remove any aspect of the form.



United States	France	Germany	Singapore	China	Japan
1-414-837-4800	33-562-601-080	49-6103-30026-0	65-6477-7293	86-21-6100-6588	81-45-461-3603

Copyright 2011 Teklynx Newco SAS. All rights reserved. Printed in the USA 03/11. TEKLYNX and LABELVIEW are registered trademarks of Teklynx Newco SAS. All other brands and product names are trademarks of their respective owners.(Y493004)

www.teklynx.com

Microsoft
GOLD CERTIFIED
Partner